

Canal Bank  
at Pa Healy Road/Park Road  
adjacent the City Canal  
A Development by  
Revington Developments Ltd

Computer Generated  
Imaging and Montage Report

OCA Architects  
October 2021

## Introduction

This is a mixed-use development composed of primarily related types of residential development.

Block 1-Student Residence and ancillary retail

Blocks 2-7 Build to Rent Apartments

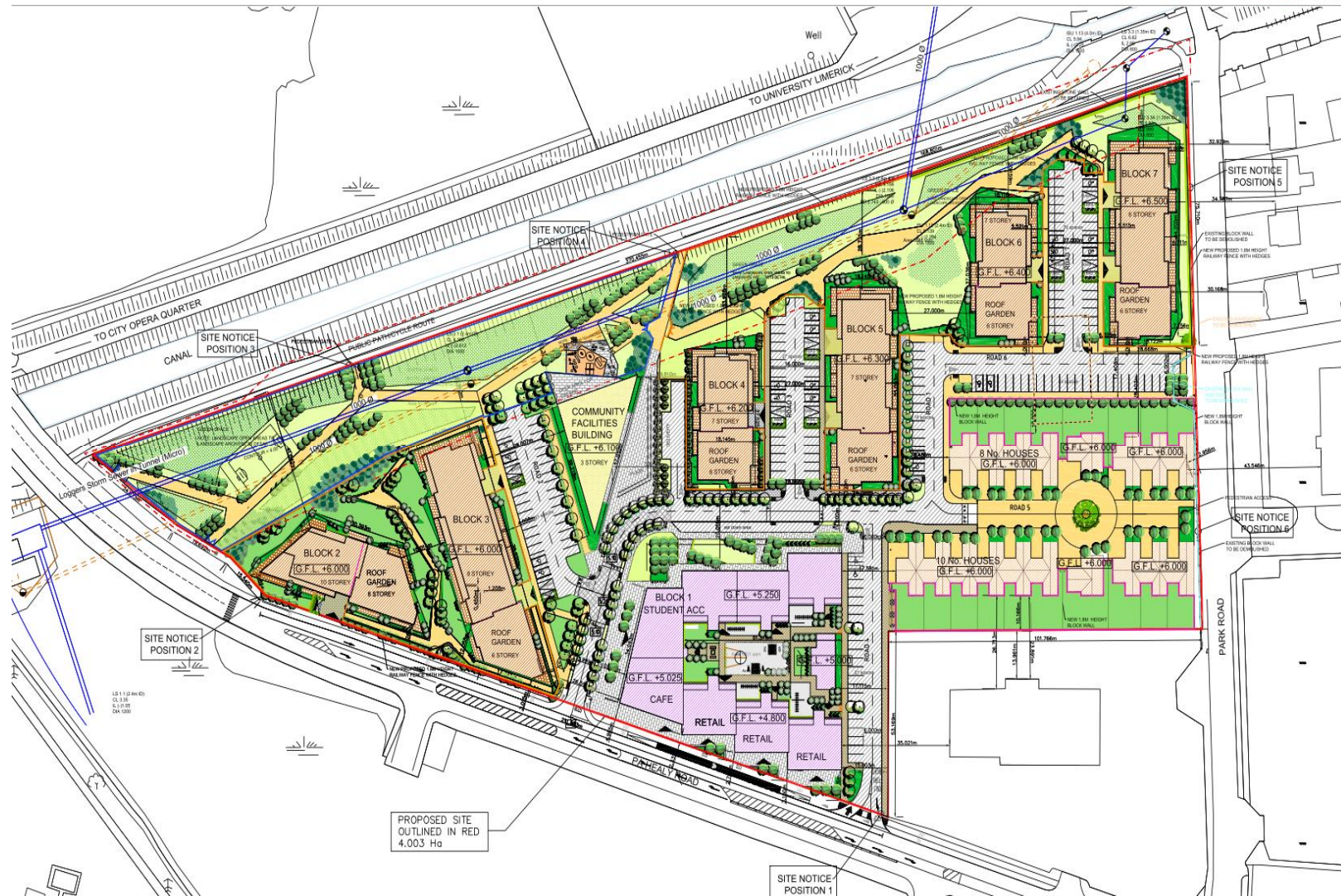
16 Dwelling townhouses

Community services building incl. a Creche.

There is a strong landscape design adjacent the city canal, with the rhythm of building orientated to allow sunlight and access penetration.

There is a strong urban line along Pa Healy Road, punctuated for light and access, with stepped design also for visual interest and skyline delineation.

Next Page- view from North West, showing the full design with landscaped park parallel to city canal.

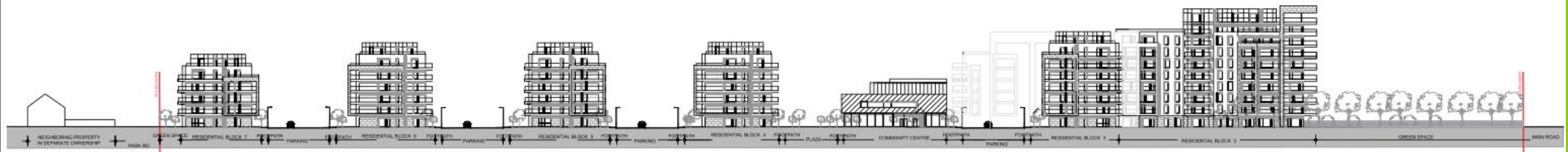






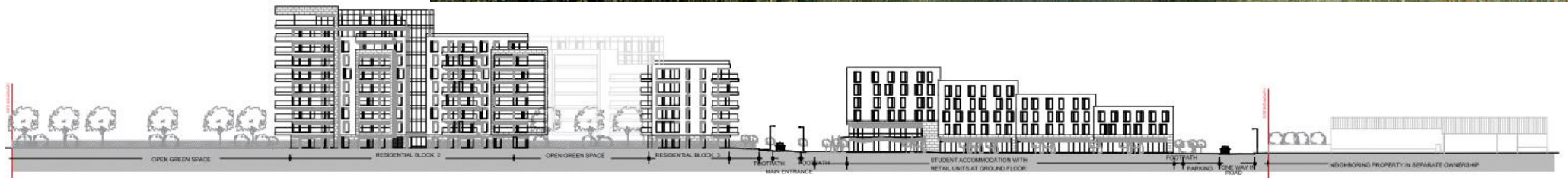


# View From Bridge From West



1 PROPOSED CONTEXTUAL ELEVATION B-B  
1 : 500

## View from Pa Healy Road



1 PROPOSED CONTEXTUAL ELEVATION A-A  
Context Elevation along Pa Healy Road



## View from North East





## View from South West





View from South





## Montage Views and Dwelling House Views



Proposed development at Canal Bank, Dublin Road, Limerick.

**GLEESON MCSWEENEY ARCHITECTS**



Proposed development at Canal Bank, Dublin Road, Limerick.

**GLEESON MCSWEENEY ARCHITECTS**

